



Handmade Tiles

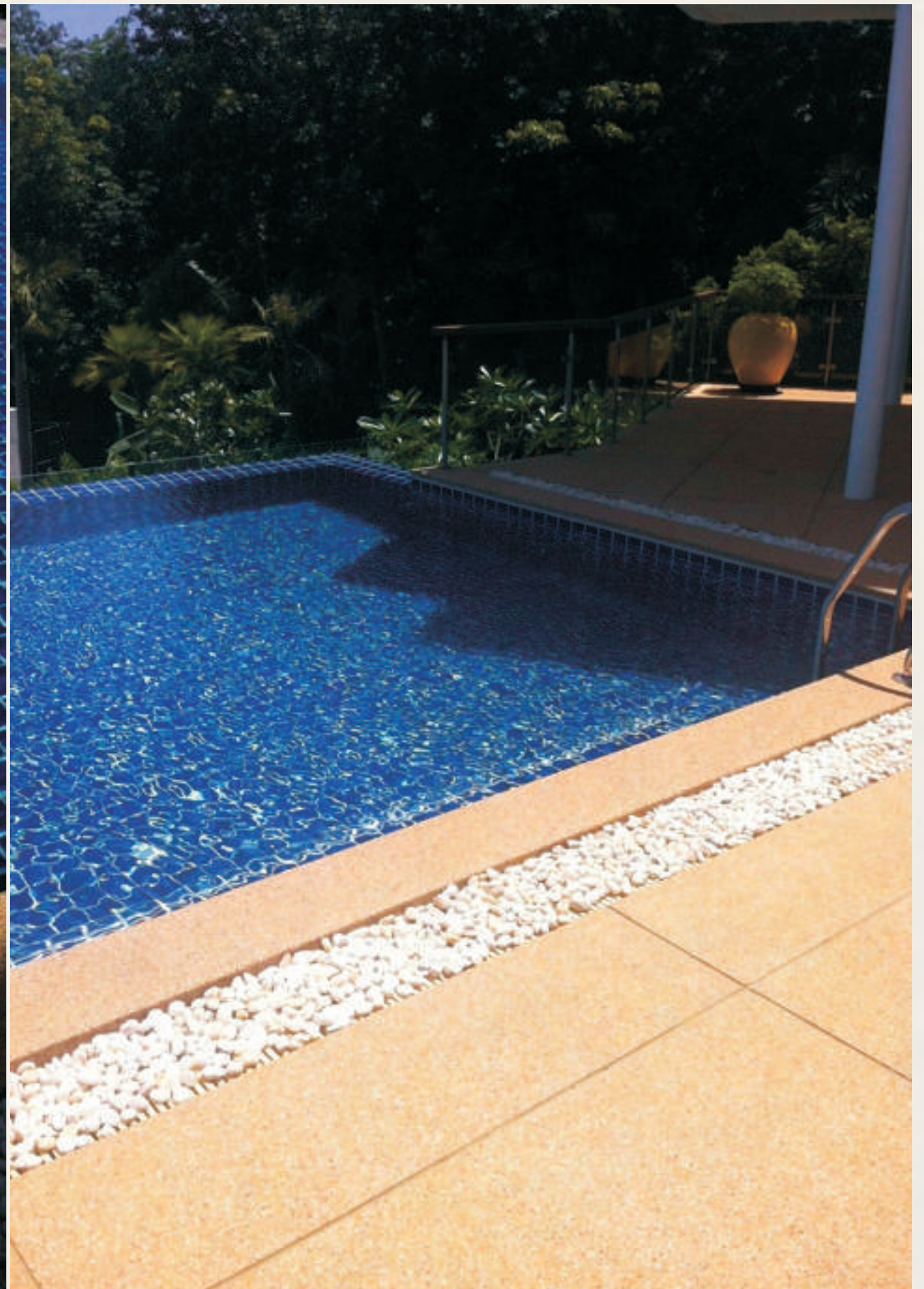
by Keramos Tile & Stone

Keramos Handmade tiles are produced manually by artisans. The clay mixture for the biscuit is made using a hand press to mold the biscuit into shape. The artisan then uses a pottery kiln to fire the biscuit. The biscuit is then glazed by hand to give it its characteristic handmade look. Using unique molds and dyes we can achieve a plethora of shapes and colors.

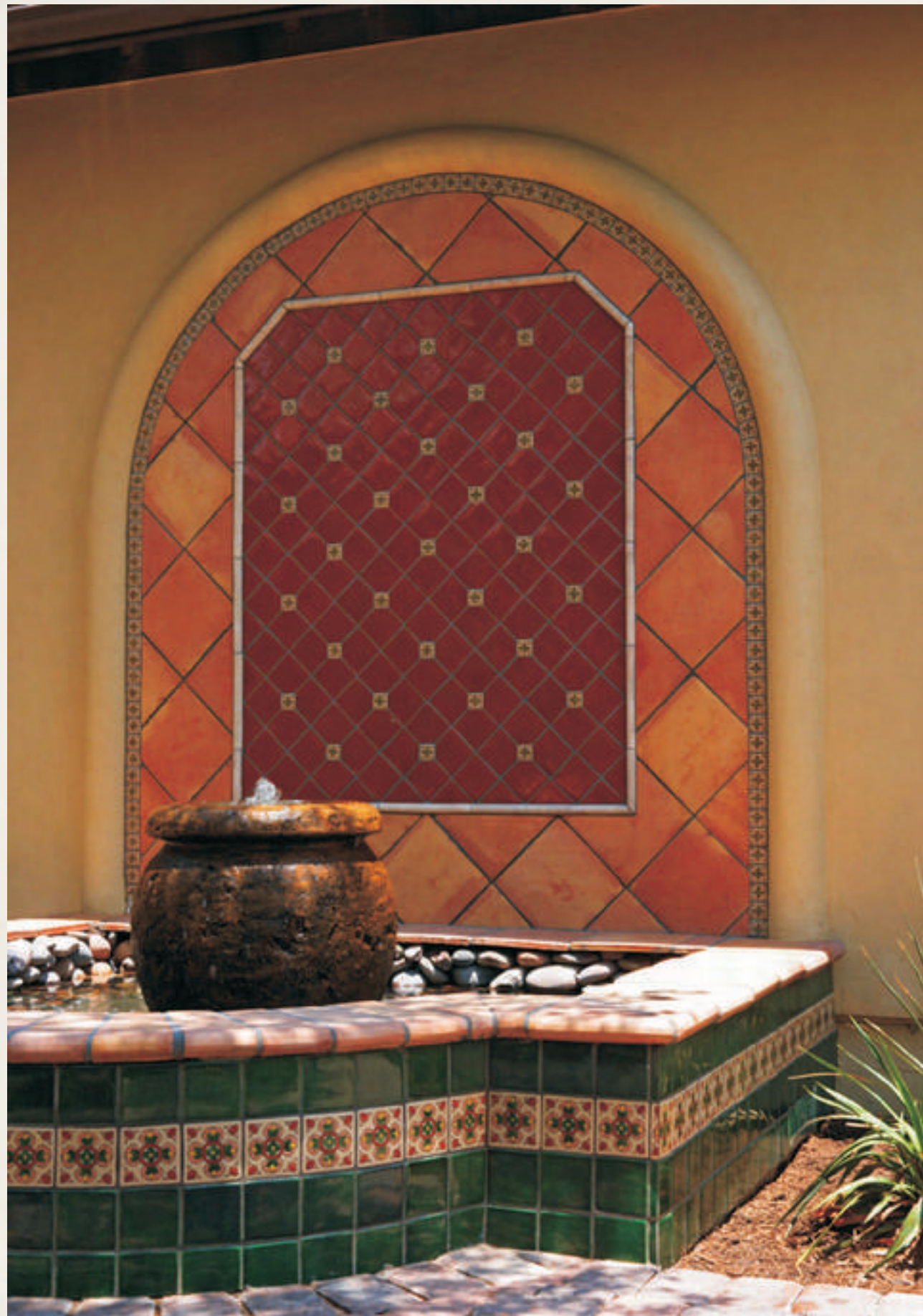


The Popular Square

Appealing for swimming pools, water bodies & bathrooms









The Chic Subway tile

Initially used in New York's Metro, and in post-modern structures in New York thereafter







The Beveled Subway tile

The authentic 1890's parisian metro tiles.

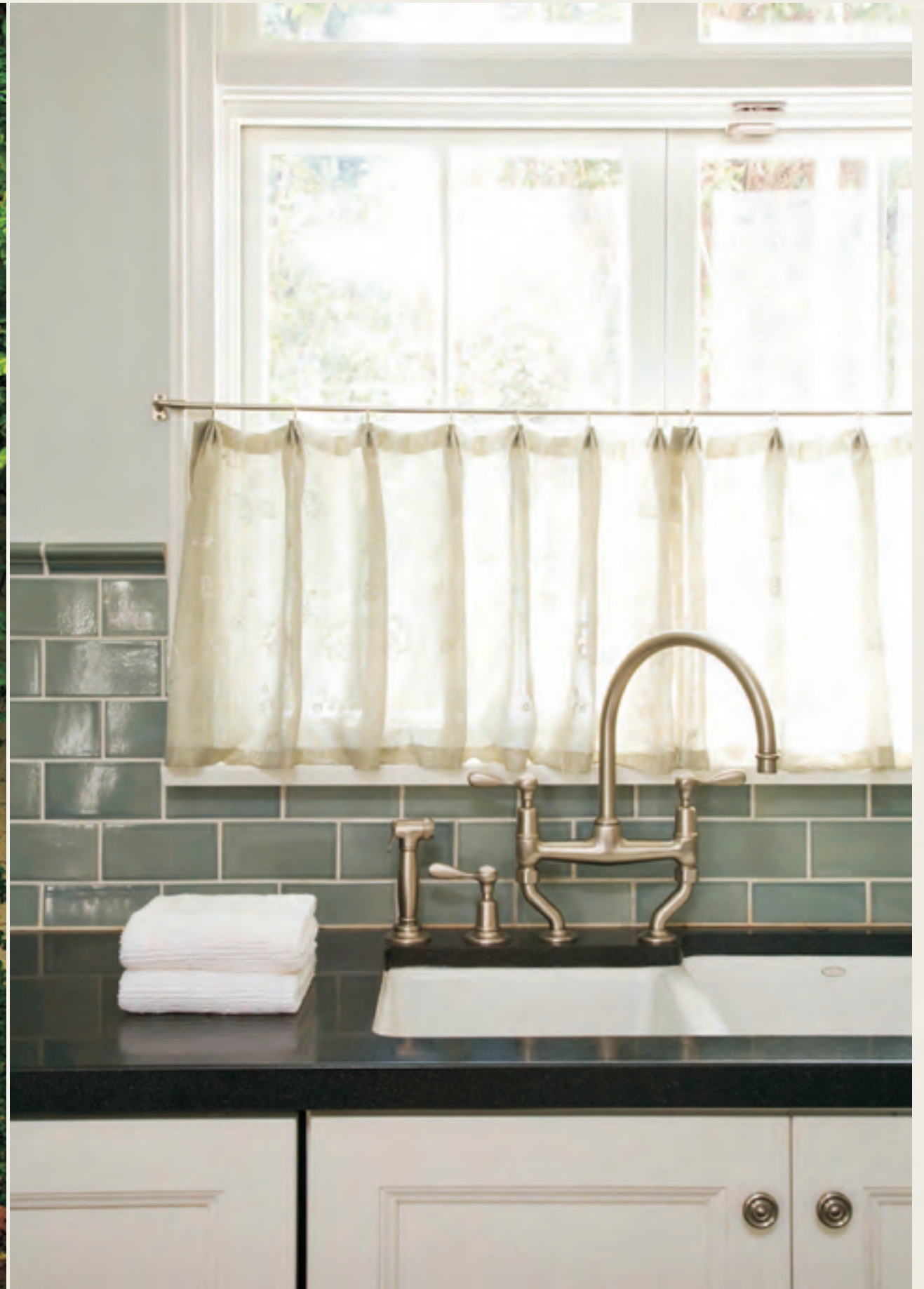






Stunning Colors

A Keramos tradition







Beautiful Shapes

The possibilities are limitless

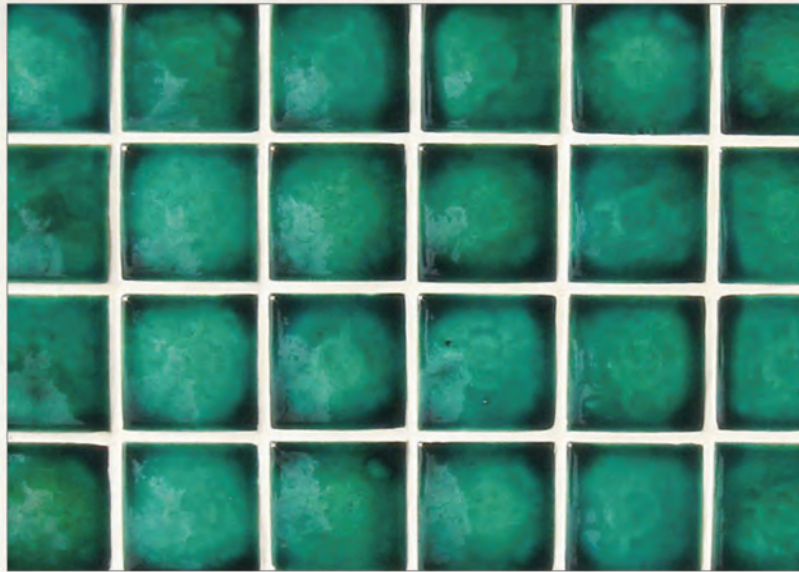




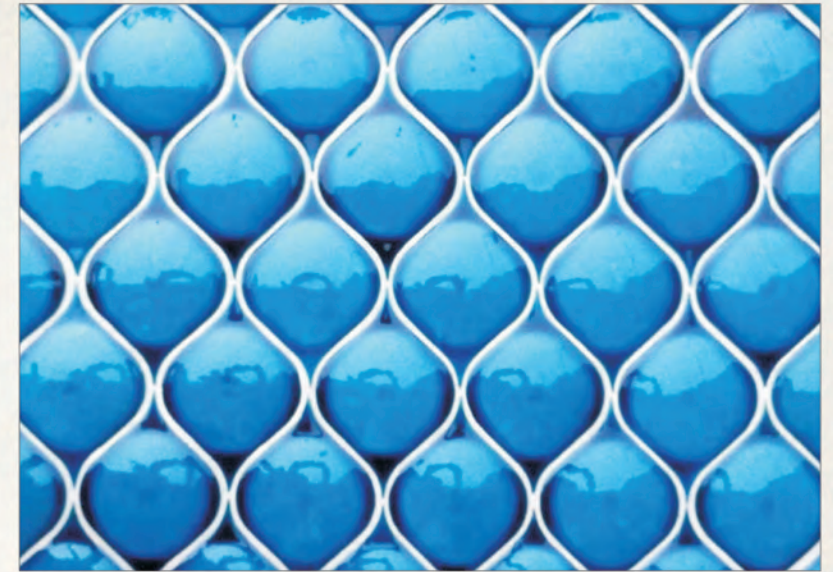
Azul Designs



SUBWAY Plain Cobalt Blue



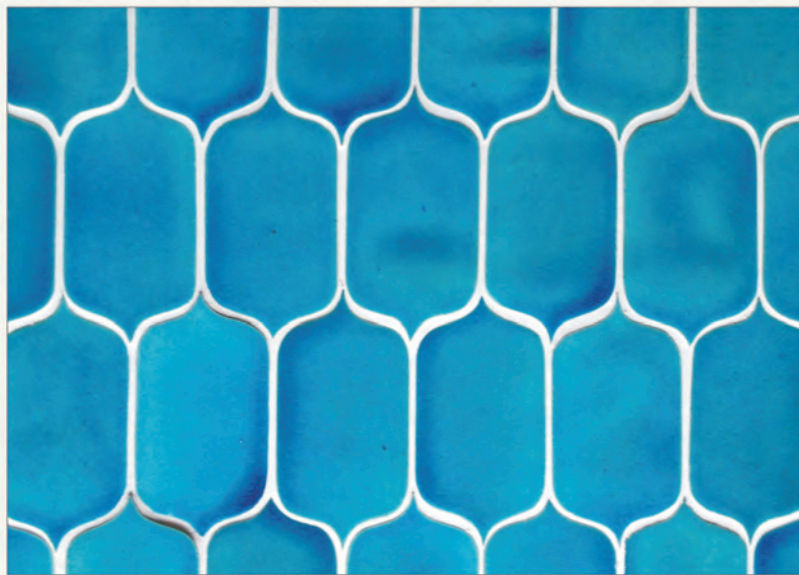
SQUARE Oval Aqua



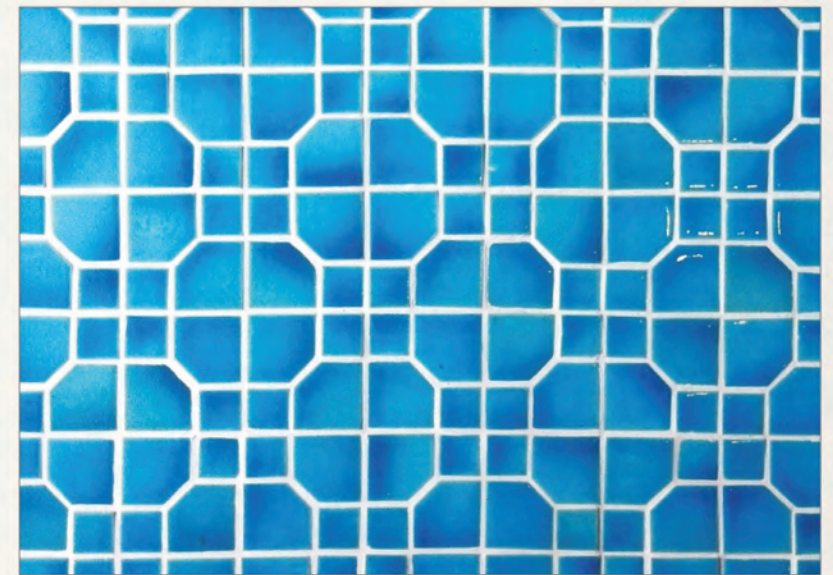
TEARDROP Oval Egyptian Blue



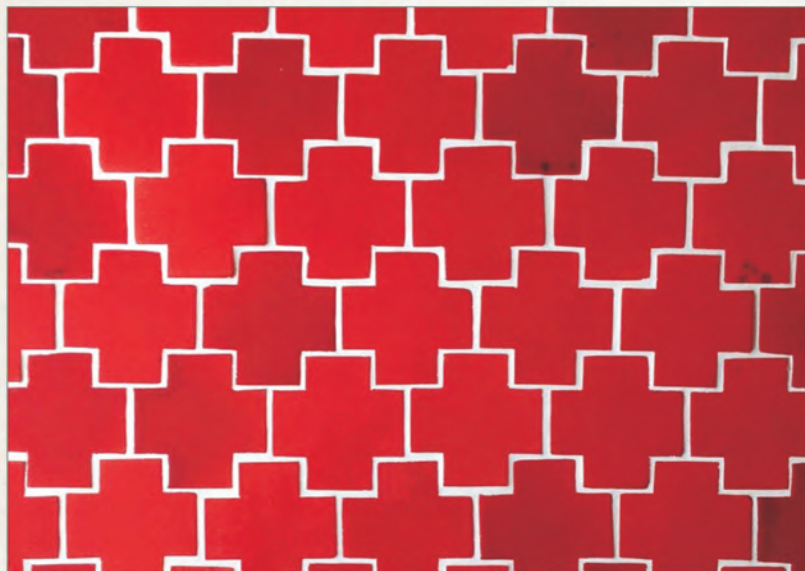
OGEE Big & Small White & Small Ivory



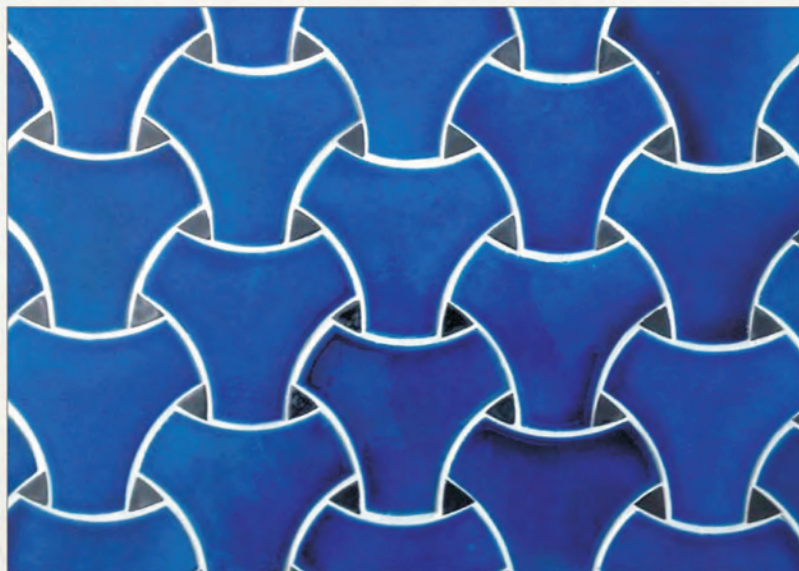
NAVONA Egyptian Blue



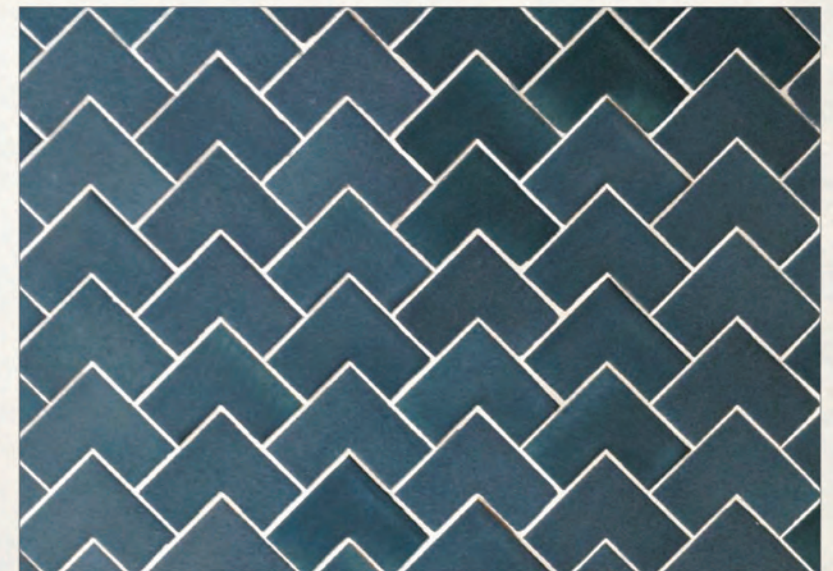
NANTES Egyptian Blue



MOROCCAN CROSS Pepsi Red



LIPARI Moroccan Blue With Black Inserts



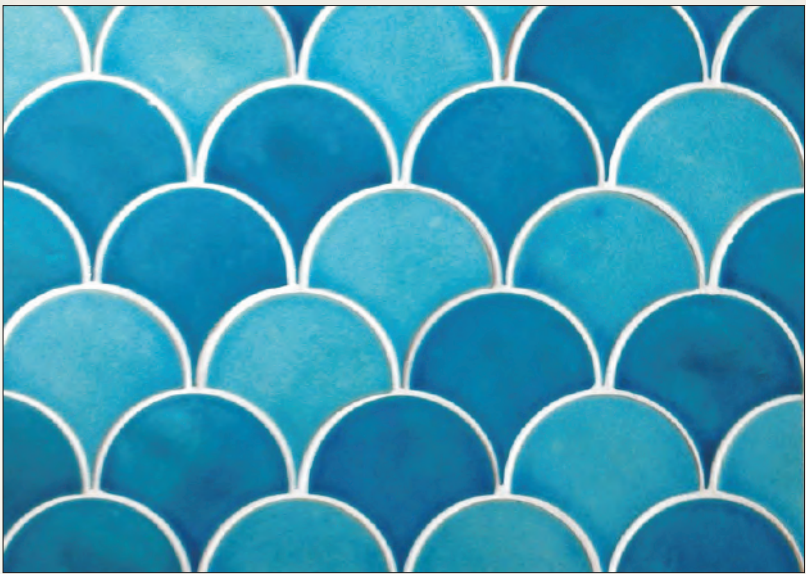
L SHAPE Grey



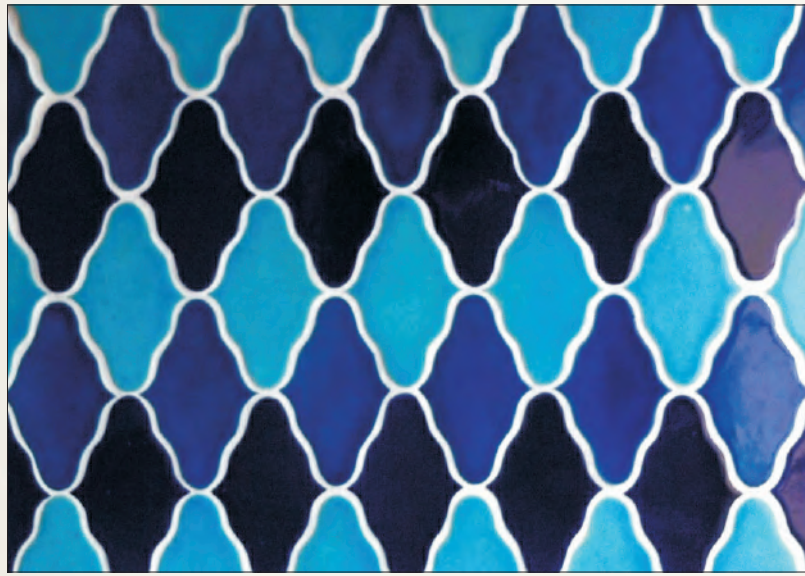
HOUSTOOTH Black & White



HONEYCOMB Egyptian Blue Cobalt Blue



FISHSCALE Egyptian Blue Light & Dark



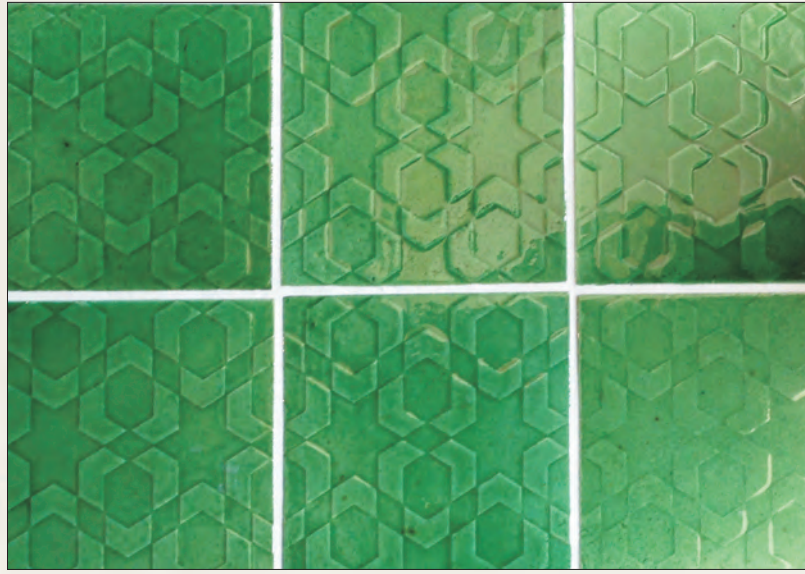
DELINA Moroccan Blue, Cobalt Blue, Egyptian Blue



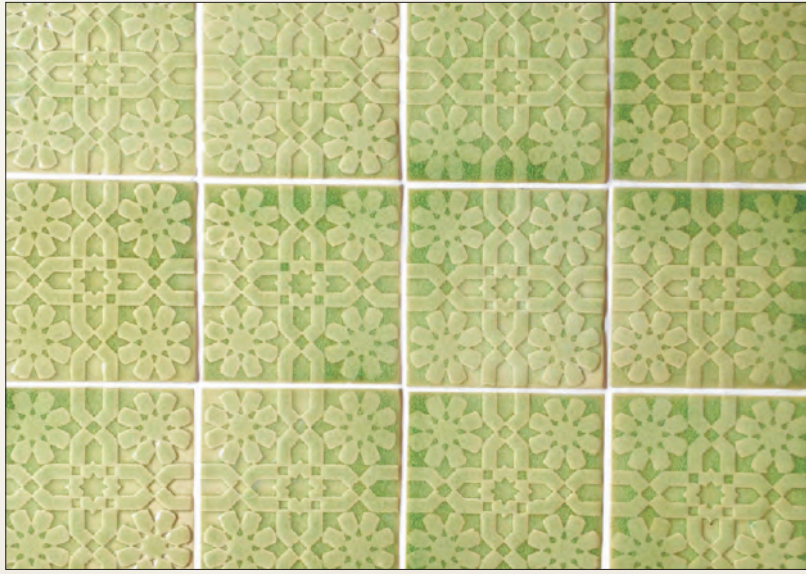
SUBWAY BEVELLED Celadon Green



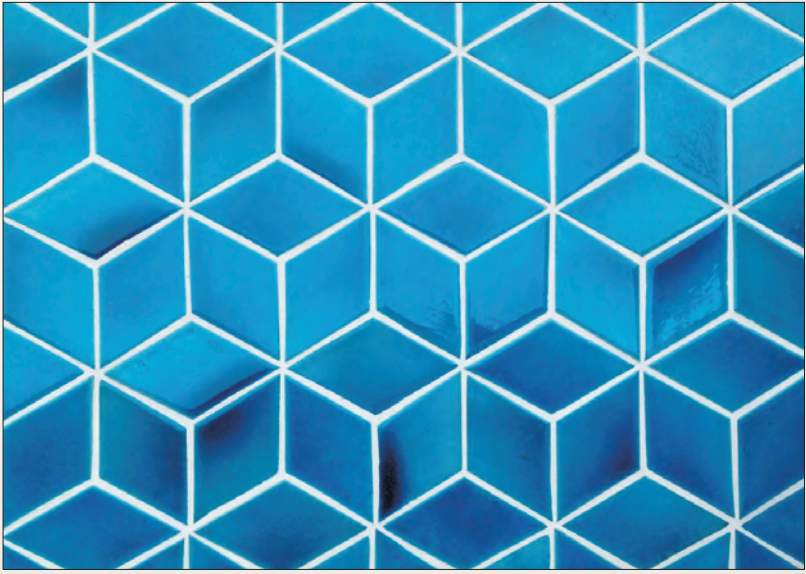
BILBAO Lime Green



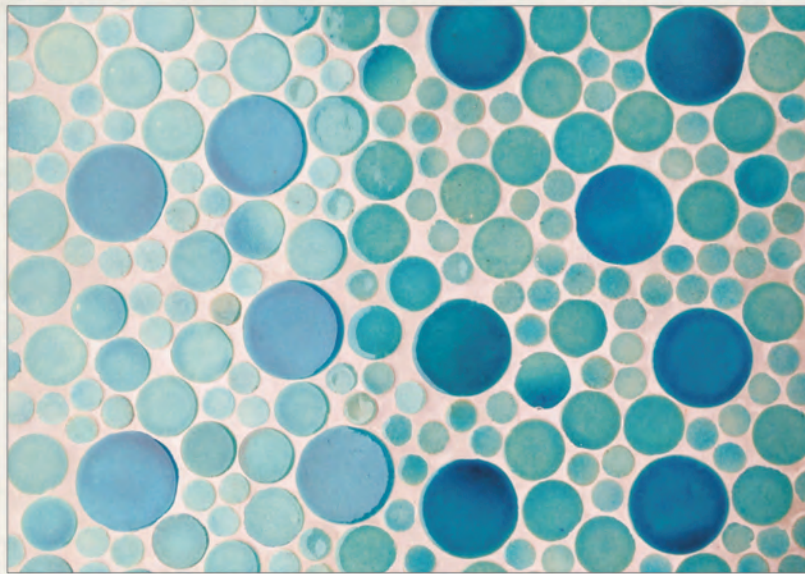
BATUR Dark Aqua



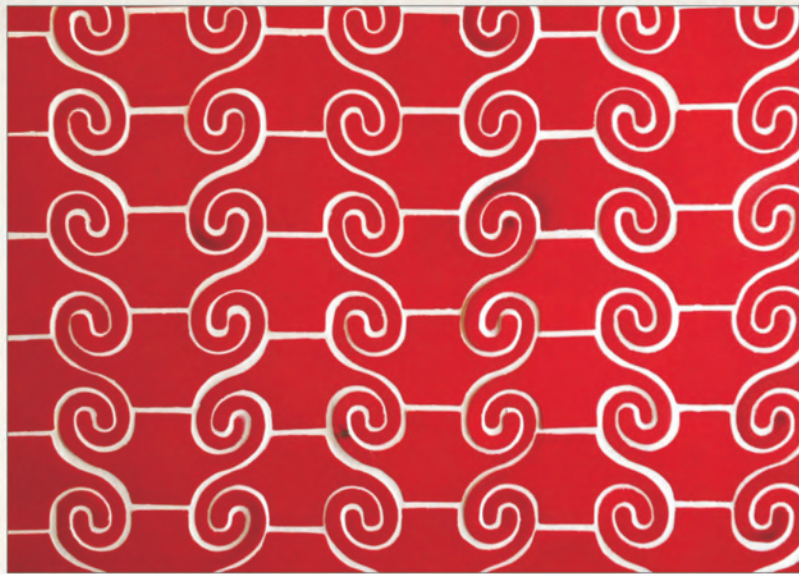
BAKU Lime Green



MESSINA Egyptian Blue



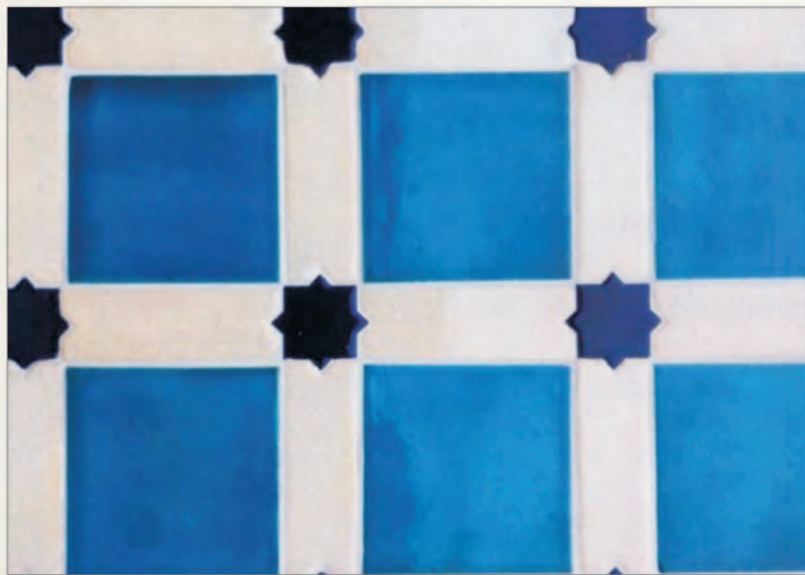
DELPHI PEBBLES Egyptian Blue Light & Dark



ANCORA Pepsi Red



TIBER-Moroccan Blue, Egyptian Blue Light & Dark, Spanish Green



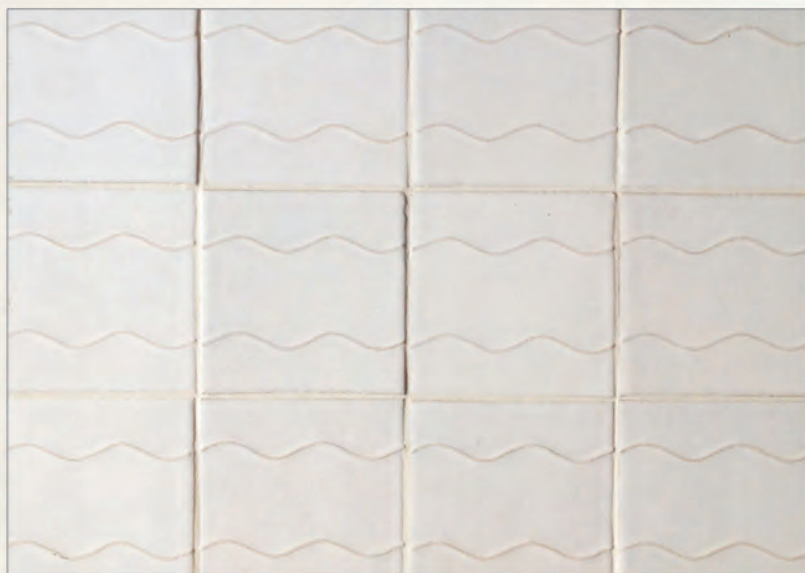
LUXAR Egyptian Blue



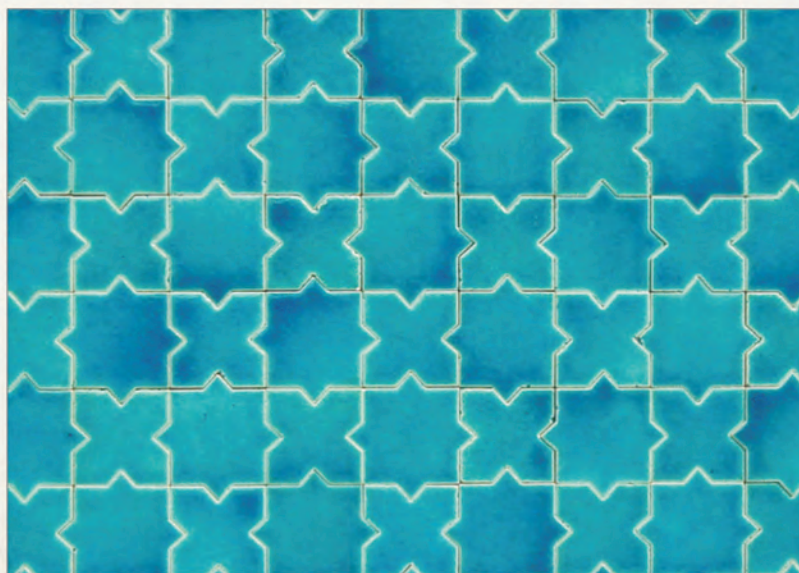
CLOVER Design Ivory & White



LONG OGEE White With Black Dote



WAVE White Wave



TABRIZ Moroccan Blue with Ridge



ROOF TILE Morroccan Blue

SPECIFICATION	DESCRIPTION
SIZES	10cmX10cm, 7.5cmX7.5cm, 7.5cm X15cm
SHAPES	SQUARE, RECTANGLE, OGEE, TABRIZ, FISH SCALE, HEXAGON
BEVELLED	SQUARE, RECTANGULAR
GLAZE COLORS	COBALT, AQUAMARINE, GREEN, WHITE, CREAM, BLACK, RED, YELLOW (FIRED AT 1100oC)
THICKNESS	1 CM APPROX
SIZE VARIATION	+/- 2% MAXIMUM
BODY	WHITE CLAY, (FIRED AT 1100C)
POROSITY	15% APPROX
USAGE	FOR WALLS ONLY
PROJECT PRICE	ON REQUEST WITH QUANTITY

Product displayed at :

KERAMOS TILE & STONE PVT. LTD

F - 580 Lado Sarai New Delhi 110030 INDIA (Next to Crescent Mall
CNG Pump) ,Tel : 011 46032765 , 41665102

Email : delhi@keramosindia.com
 keramos@keramosindia.com

contact : Ravindran +91 9810385142, R.Anand 09818663525