



DOMUS POLISHED CONCRETE

BY KERAMOS TILE & STONE

WHAT IS POLISHED CONCRETE?

WE START WITH PLAIN CONCRETE

- TREAT IT WITH
CHEMICAL DENSIFIERS
- COLOR USING
PIGMENTS
- THEN POLISH OR GRIND
IT TO GIVE IT A
STUNNING FINISH



DOMUS POLISHED CONCRETE FLOORS

ARE DURABLE

HAVE NATURAL APPEAL

HAVE VERY LOW MAINTENANCE

IMPROVE WITH AGE

ENHANCE COMMON CONCRETE TO A POLISHABLE SURFACE

ENVIRONMENTALLY FRIENDLY

CONTEMPORARY

COST EFFECTIVE

CHIC

CRACKS ARE COMPLETELY MINIMIZED

PLASTICIZERS REDUCE DRYING SHRINKAGE,
CHEMICAL ADMIXTURES TO INCREASE HARDNESS,
DENSIFIERS TO INCREASE SURFACE STRENGTH,
SAW CUT DIVIDERS TO ISOLATE ANY CRACKS THAT MAY DEVELOP

POLISHING

DIAMOND GRINDING AND POLISHING MACHINES LEAVE A GOOD, LONG-
LASTING SHEEN

RE POLISHING IS POSSIBLE.

THICKNESS

50 MM IS REQUIRED FROM THE FINISHED FLOOR LEVEL.

CHARACTERISTICS

SLIGHT UNDULATIONS AND COLOR DISTRESS

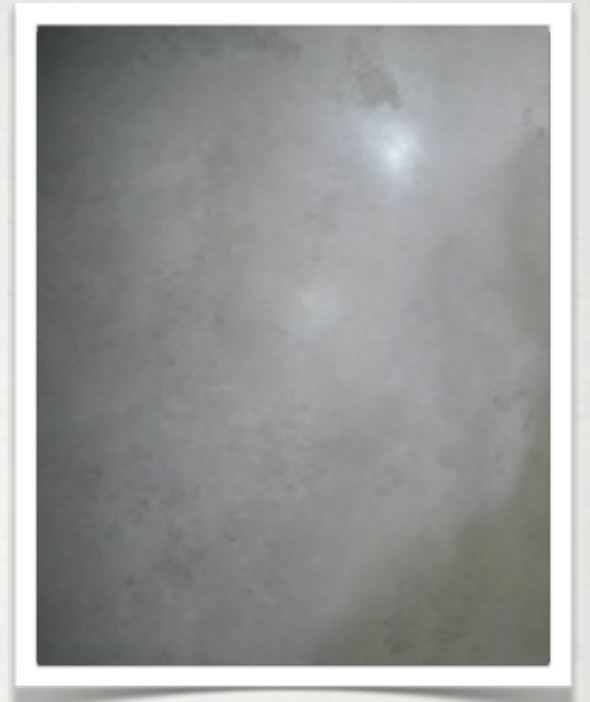


PIGMENT FINISH

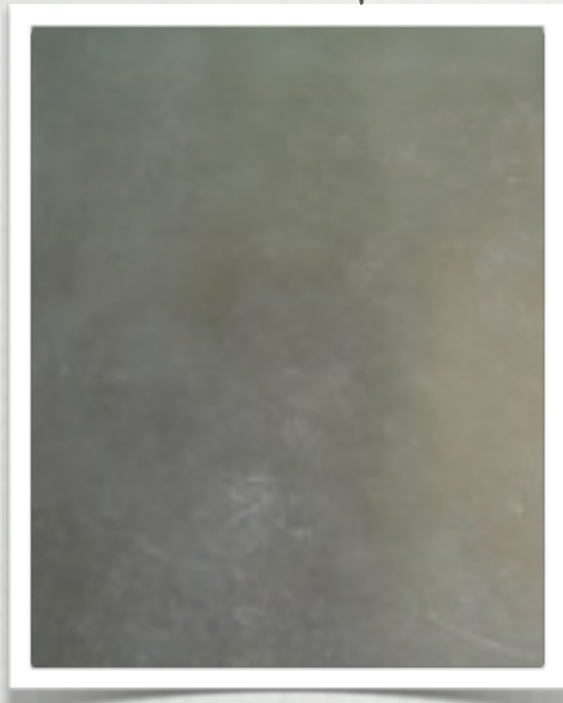
COQUINA



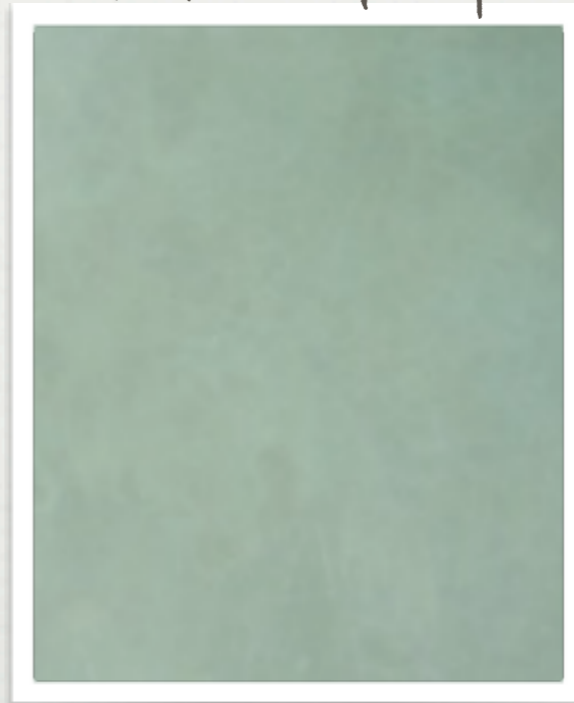
SAND



GREY



NICKEL GREY



COLOR OPTIONS

Custom Colors Available Upon Request



NATURAL GRAY BC-1
CH-00167-60



FRENCH GRAY BC-1
CH-00101-60



SHALE GRAY BC-2
CH-00220-60



COBBLESTONE GRAY BC-1
CH-00061-60



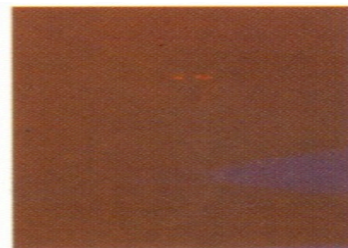
SUNSET GRAY BC-1
CH-00242-60



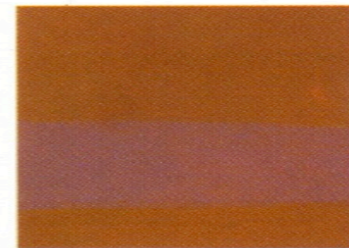
BROWNSTONE BC-1
CH-00038-60



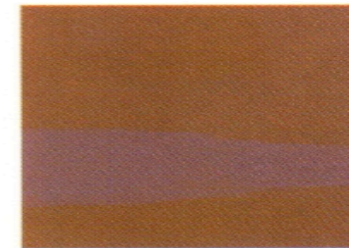
FOREST BROWN BC-1
CH-00093-60



RUST BROWN BC-1
CH-00203-60



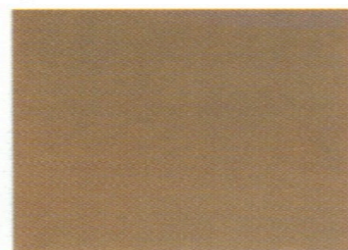
MEXICAN TILE BC-1
CH-00152-60



AUTUMN BROWN BC-1
CH-00013-60



HARVEST AMBER BC-2
CH-00119-60



SONORA TAN BC-2
CH-00228-60



CARAMEL BC-2
CH-00047-60



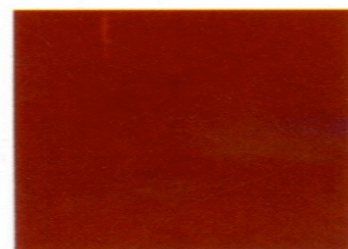
DESERT TAN BC-2
CH-00084-60



CHARGREEN BC-2
CH-00052-60



LIGHT BROWN BC-2
CH-00135-60



FRANCISCAN RED BC-1
CH-00103-60



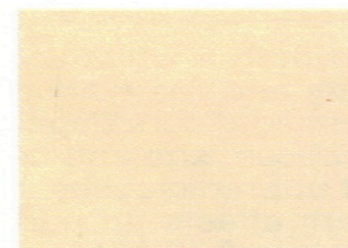
BRICK RED BC-1
CH-00040-60



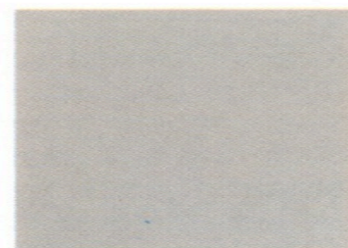
COCO PLUM BC-2
CH-00066-60



BOCA PINK BC-2
CH-00032-60



COQUINA BC-3
CH-00068-60



NICKEL GRAY BC-3
CH-00160-60



SAND BC-2
CH-00214-60



CREAM BC-3
CH-00075-60



STEEL BLUE BC-4
CH-00232-60



COMMERCIAL



FOOD & BEVERAGE



LIVING

PRICE EX-DELHI (GROUND FLOOR)

RS. 335/-PER SQ.FT (VAT EXTRA)
INCLUDES, MATERIAL, INSTALLATION & POLISHING .

PENETRATING SEALER (OPTIONAL)-RS. 35/SQFT.

PAYMENT TERMS

50% ADVANCE
40% AFTER INSTALLATION
10% AFTER POLISHING & SEALING

SPECIFICATION	VALUE DESCRIPTION
Thickness	50mm
Divider	Saw Cut and Grout 2mm thickness
Panel size	2metre X 2metre Max
Concrete	M20 Grade
Densifier	Liquihard
Buffing	For glossy smooth Surface
Polishing	Diamond Grits upto 3000
Sealer (Optional)	Penetrating sealer / Impregnating sealer / Wet look
Colors	Shake on powder
Reinforcement	Polypropylene fibre mesh.

INSTALLATION

POLISHED CONCRETE IS INSTALLED BY KERAMOS

WILL BE CARRIED OUT WITHIN 4 WEEKS OF CONFIRMED ORDER. FLOOR POLISHING WILL COMMENCE 4 WEEKS AFTER INSTALLATION. FLOOR POLISHING WILL TAKE ONE WEEK.

MAINTAINENCE

INVOLVES CLEANING THE SURFACE WITH NEUTRAL pH CLEANER ADDED TO WATER & SCRUBBED WITH A SOFT NYLON BRUSH

FOR FURTHER INFORMATION
PLEASE CONTACT :

KERAMOS TILE & STONE PVT. LTD.
F-580 LADO SARAI
NEW DELHI – 110 030

TEL : 011-41665102/ 29523534

CONTACT PERSON: NITESH MISHRA
9810280063, R.ANAND 9818663525,
RAVINDRAN 9810385142

EMAIL: DELHI@KERAMOSINDIA.COM,
MARKETING@KERAMOSINDIA.COM