

*KERAMOS*

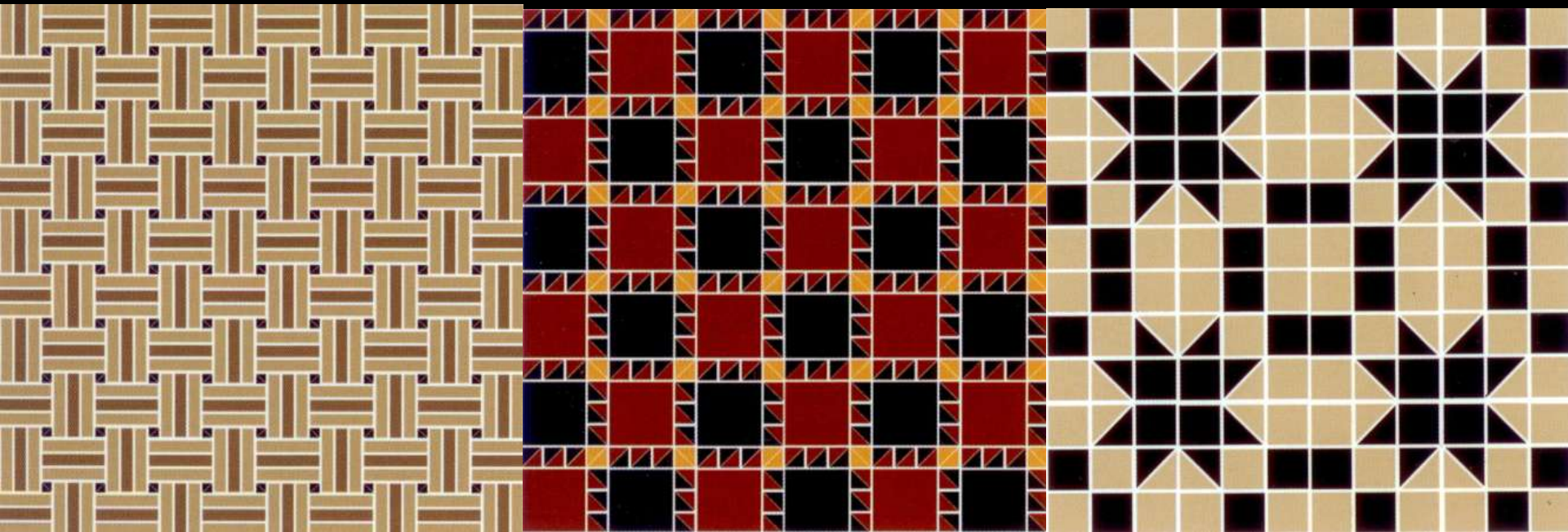
*LAUNCHES*

*PORTUGUESE  
PAVING*



# What is “PORTUGUESE PAVING” ?

Made with small porcelain tiles of varying  
geometric shapes in a repeat pattern  
this seamless flooring gives an appearance  
of a  
carpet







*After installation, the floor is grouted with a special polishable grout.*

*The floor can then be semi or fully polished to give a seamless look.*



## *PORTUGUESE PAVINGS :*

*Are pre-assembled on fibre mesh and supplied ready to lay. There is no need to remove the mesh before fixing.*

*Designs can be custom made using various colors of porcelain and grout.*

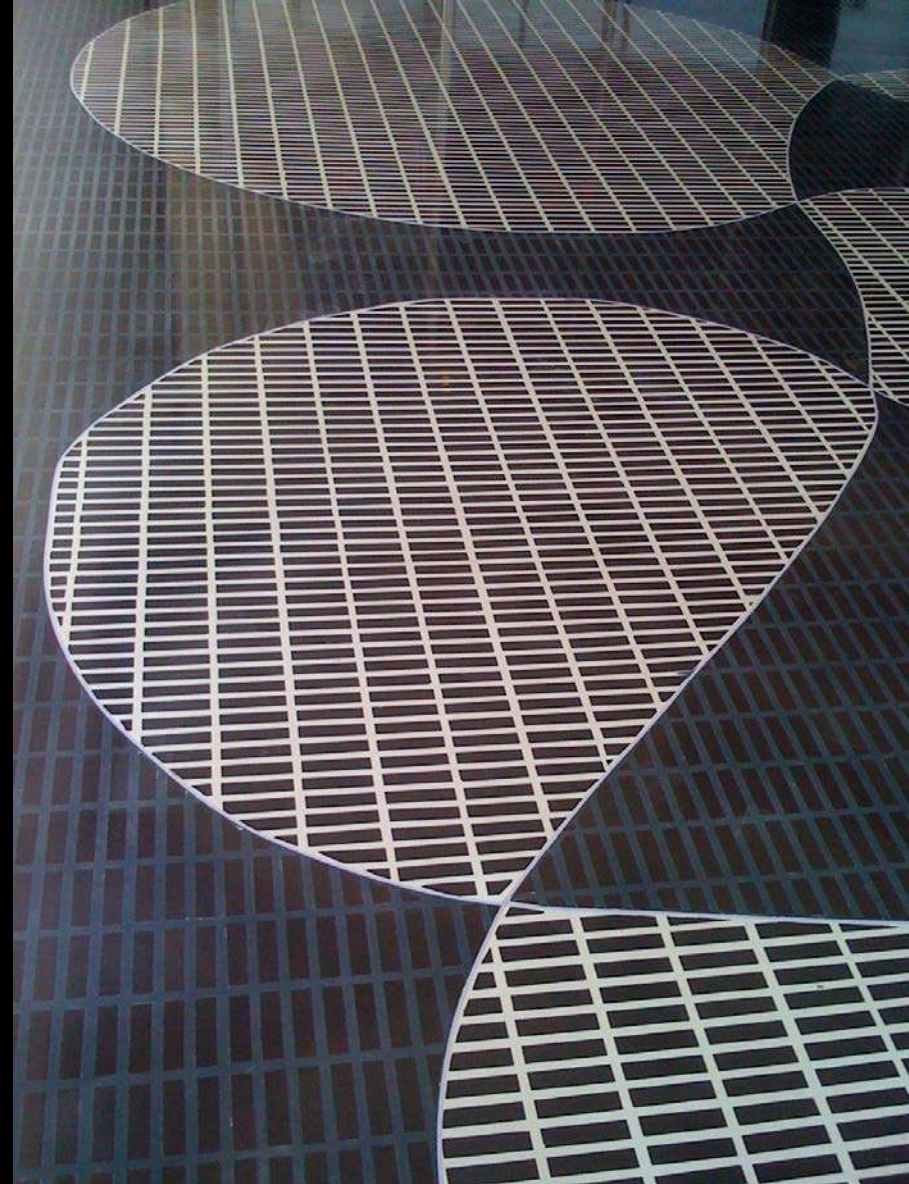


*Have you ever been curious about the floors of old Portuguese homes in Goa?*



# Where can Portuguese paving be used?

- Airports
- Casinos
- Convention Centers
- Corporate Headquarters
- Government Buildings
- Hospitals
- Libraries
- Religious Institutes
- Residences/ Villas
- Restaurants
- Retail Malls
- Boutiques
- School Buildings
- Art Galleries
- Museums





# *What MAINTENANCE is required for KERAMOS' PORTUGUESE PAVING ?*

*This product does not  
require much  
Maintenance  
except for  
damp mop  
on the surface with  
KERAMOS'  
recommended  
cleaner.*



# *Where can I see KERAMOS' PORTUGUESE PAVING?*



*This product is displayed at the  
KERAMOS' Delhi*

*Small samples too are available on request*



# *When Can Portugese Paving Be Delivered & Installed ?*



*Delivery for this product is 4-6 weeks from the date of order confirmation. Installation will take approx 1 week.*

# *Who installs KERAMOS' PORTUGUESE PAVING ?*



*This is done by KERAMOS' authorized installer.*



S.NO	SPECIFICATION	VALUE
1	Material	Porcelain unpolished
2	Thickness	8-10mm
3	Grout	Polishable Epoxy Grout
4	Size of Mosaic	12"x12"
5	Grout Width	2mm and above
6	Polishing	Diamond Grits upto 3000
7	Sealer	Penetrating sealer / impregnating sealer / wet look
8	UV Light Resistant	Yes
9	Flatness of Surface	Concavity / Convexity not to exceed 0.5mm
10	Water absorption	Less than 2%
11	Usage	Heavy Traffic Area / Residential Areas

# How much does PORTUGUESE PAVING cost?

*PRICE : Price on Request .*

*Price of custom designs depending on :*

*Design*

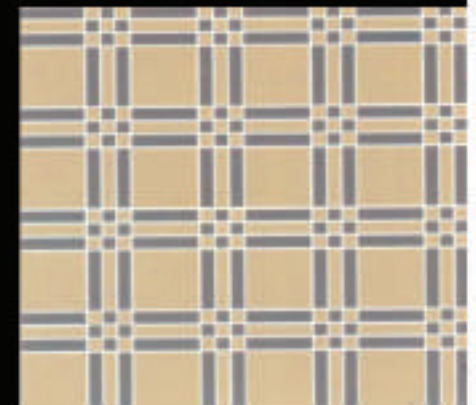
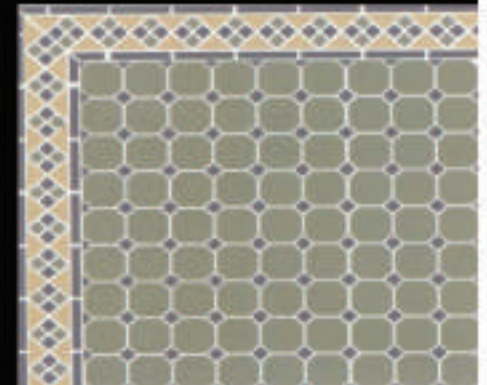
*Number of colors*

*With or without meshing*

*Location of site*

*Preparation of base*

*Degree of polish*





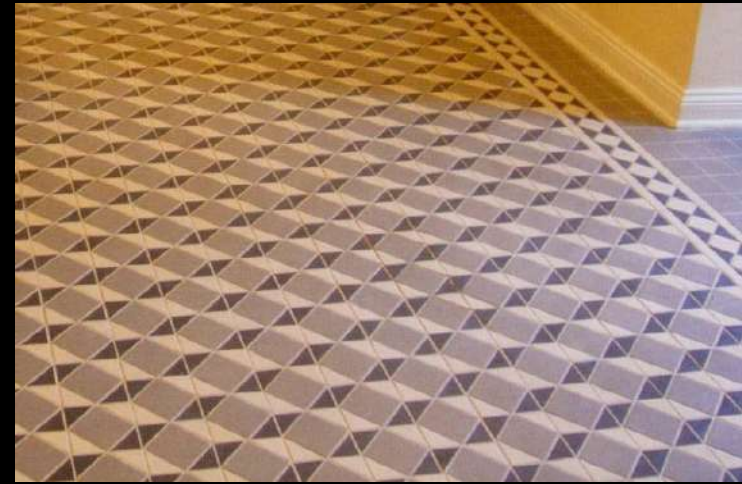
# *What are the payment terms?*



*50% Advance with order confirmation.  
40% Before dispatch from factory  
10% After completion of polishing.*

# What Are the Advantages of Portuguese Paving

- Seamless
- Any design can be created
- Wide color palette
- Thickness (10mm)
- Fast Installation (compared to marble which can take up to 4 weeks. This is pre-assembled)
- Light weight flooring (less use of cement & steel)
- It may be laid and polished in 1 Week.
- It is competitively priced compared to Italian marble.
- Low and easy maintenance





*For further information please contact :*

*NEW DELHI*

*Keramos Tile & Stone Pvt .Ltd*

*F-580, Lado Sarai-, New Delhi-110030,*

*Tel: 011 -41665102, 29523534*

*Contact . R.Anand Mob: 9818663525,*

*Ravindran- Mob- 9810385142*

*Email: delhi@keramosindia.com,*

*marketing@keramosindia.com*