



# LYON SEAMLESS FLOORS

BY KERAMOS TILE & STONE

# WHAT ARE LYON SEAMLESS FLOORS

- Lyon floors are made with a combination of cut stone or stone mosaic and cement terrazzo.
- The stone or mosaic on mesh is laid on site. Terrazzo grout is cast on site thereafter and the entire floor left to cure for a week. Once cured the floor is grinded and polished to desired level of gloss
- It can be used indoors as well as outdoors for any pedestrian application. Not advised for vehicular traffic. Ideal for Homes, Retail, Hospitality, Institutions
- Lyon has the two fold benefit of stone and terrazzo in terms of longevity. The floor usually outlasts the entire life of the building
- The large range of colors, designs, and materials.
- Affordable solution for architects and building owners alike. When you factor the one-time installation cost combined with low frequency in replacement costs, Lyon is among the lowest life-cycle costs in flooring.
- Easy to maintain: All you need is soap and water.
- Resistant surface: It is rare to damage a Lyon floor. Lyon resists water damage, fire damage, chemical spillage, and other stain risks. With a recommended sealer you can add additional protection to the Lyon floor.



**Design # 53**

# **LYON - VENEZIA**

**SEAMLESS FLOORS WITH  
BROKEN STONE PIECES  
AND CEMENTITIOUS  
TERRAZZO DONE IN THE  
CLASSIC VENETIAN  
STYLE**



*China Mosaic:*

*Cast with broken pieces of stone and grouted with cement terrazzo. Polished for a Finished look.*



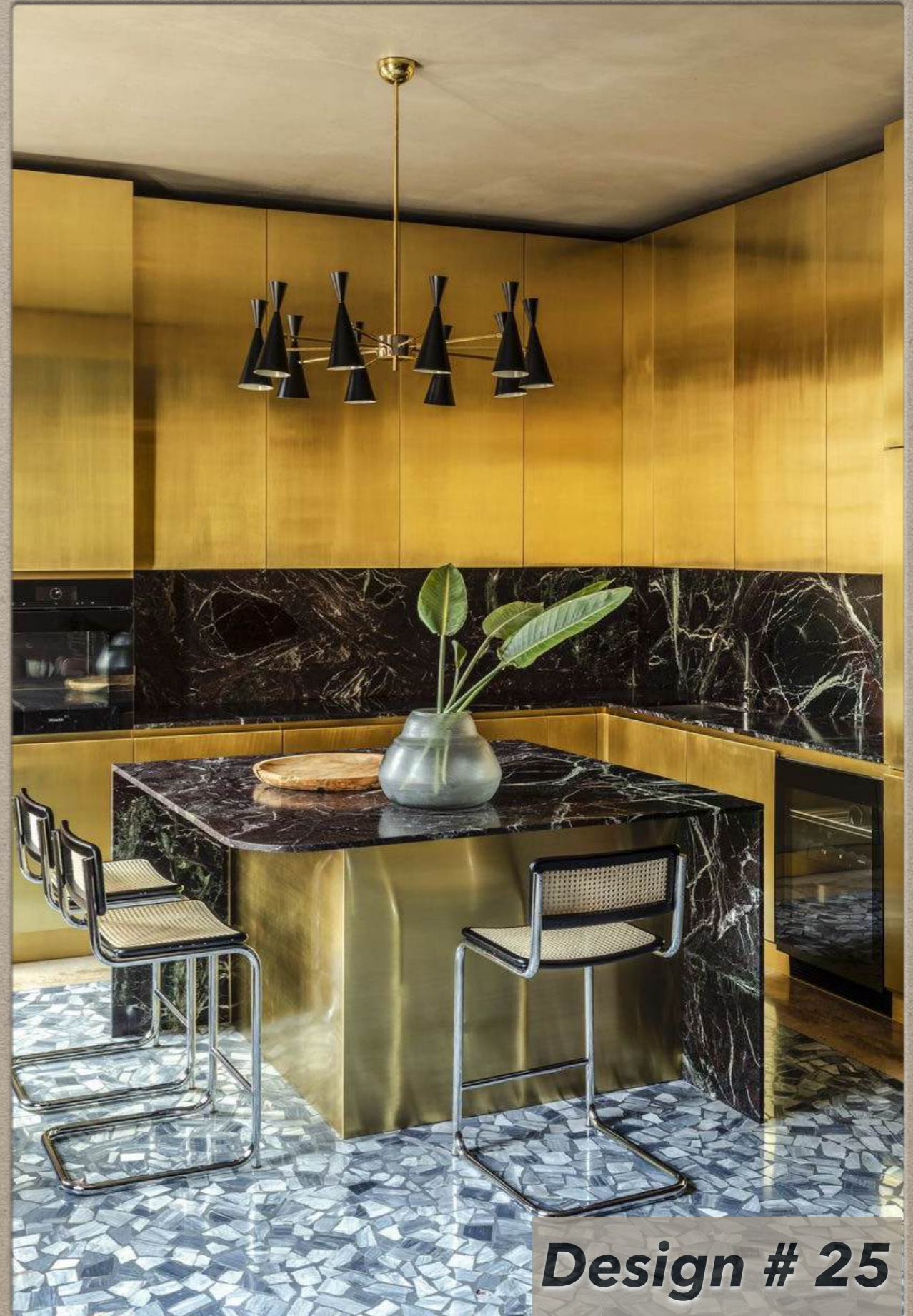
**Design # 54**



**Design # 55**



**Design # 56**



**Design # 25**



**Design # 57**



**Design # 3**



**Design # 25**



**Design # 8**

# **LYON - VERONA**

**SEAMLESS FLOORS CAST WITH SIMPLE GEOMETRIC  
PIECES OF STONE AND GROUTED WITH CEMENT  
TERRAZZO. POLISHED FOR A FINISHED LOOK.**

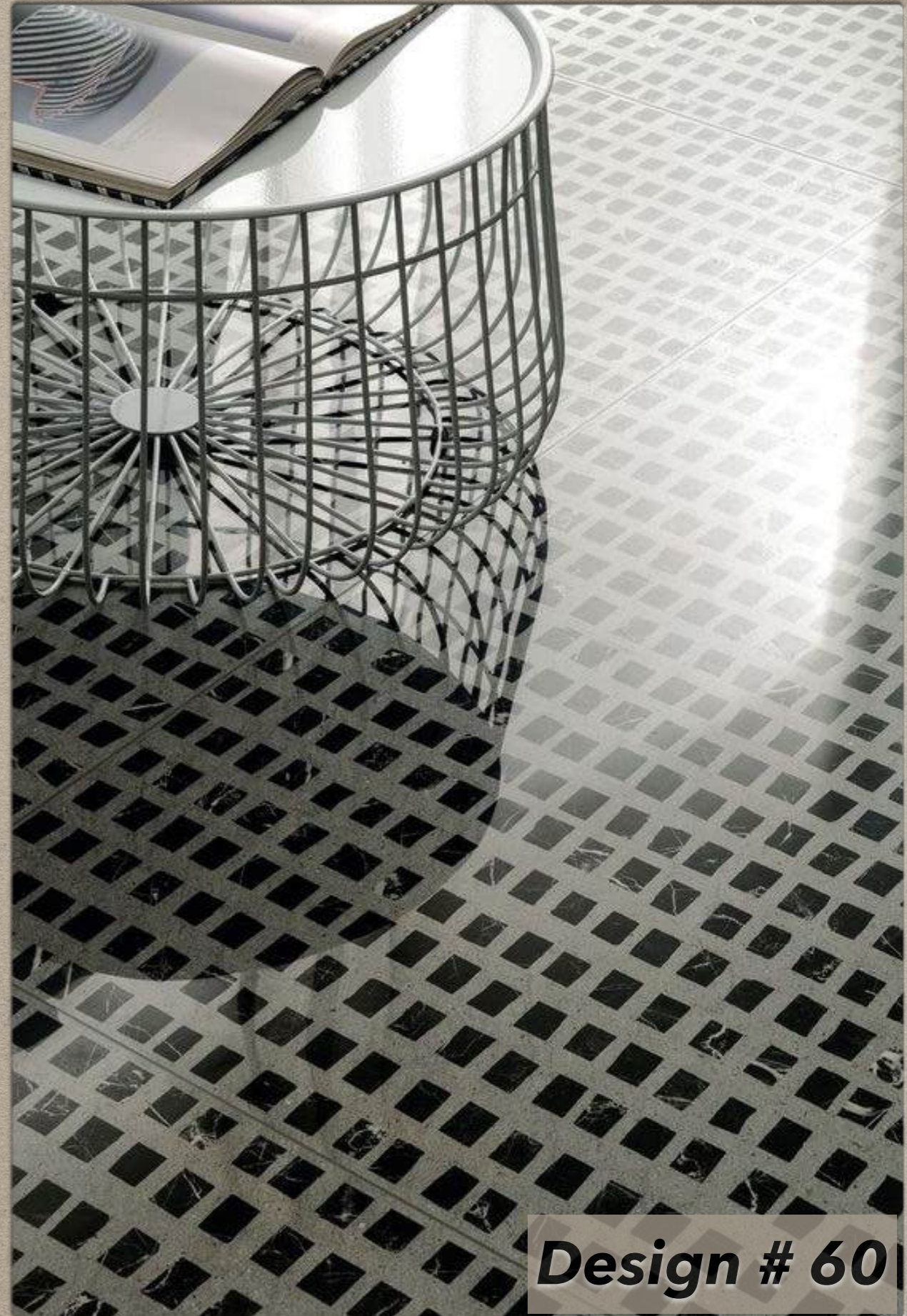




**Design # 58**



**Design # 59**







**Design # 62**



**Design # 63**



**Design # 64**



***Design # 67***



**Design # 68**



**Design # 69**





***Design # 70***



**Design # 71**



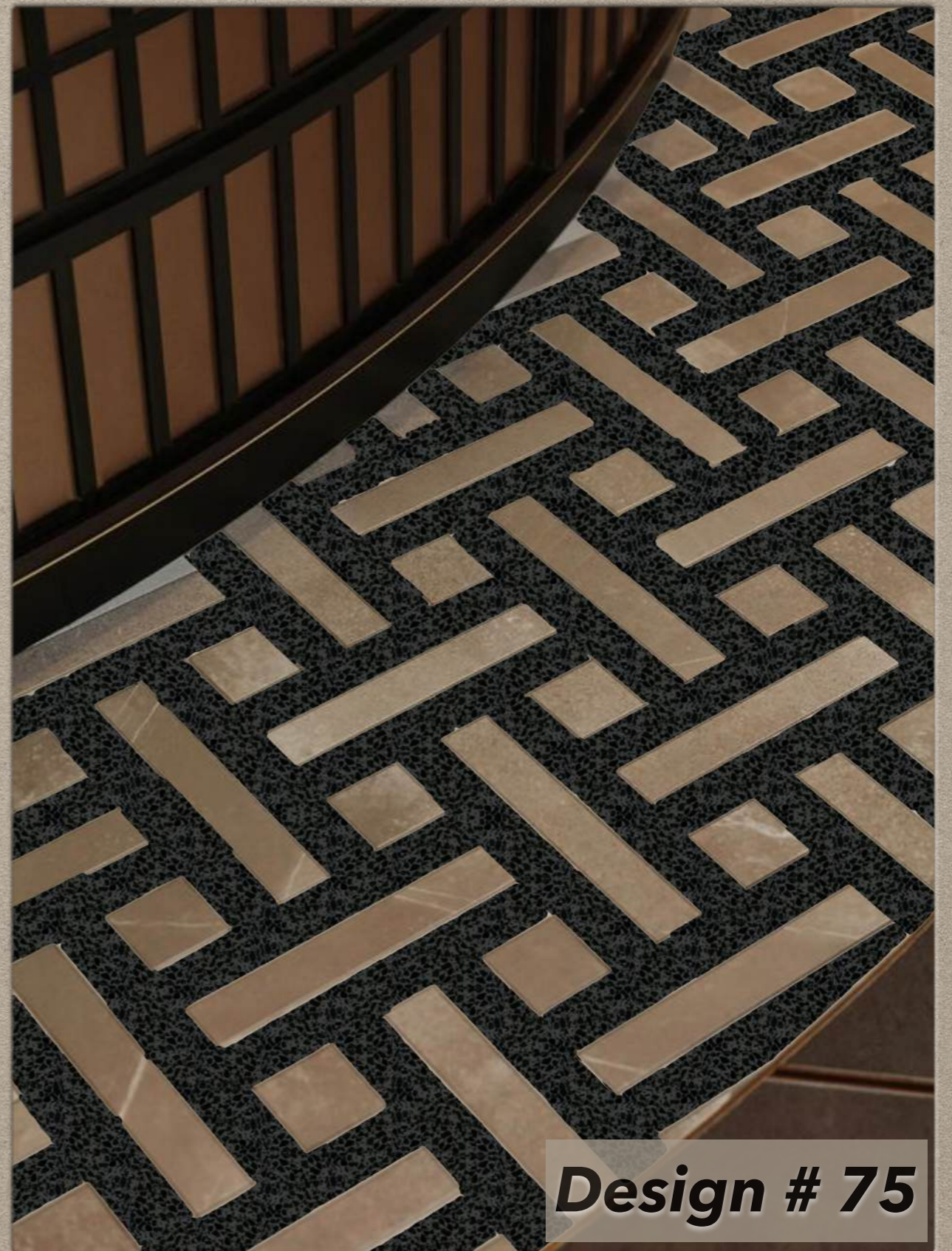
**Design # 72**



**Design # 73**



**Design # 74**



**Design # 75**



***Design # 76***



**Design # 77**



**Design # 78**



**Design # 79**

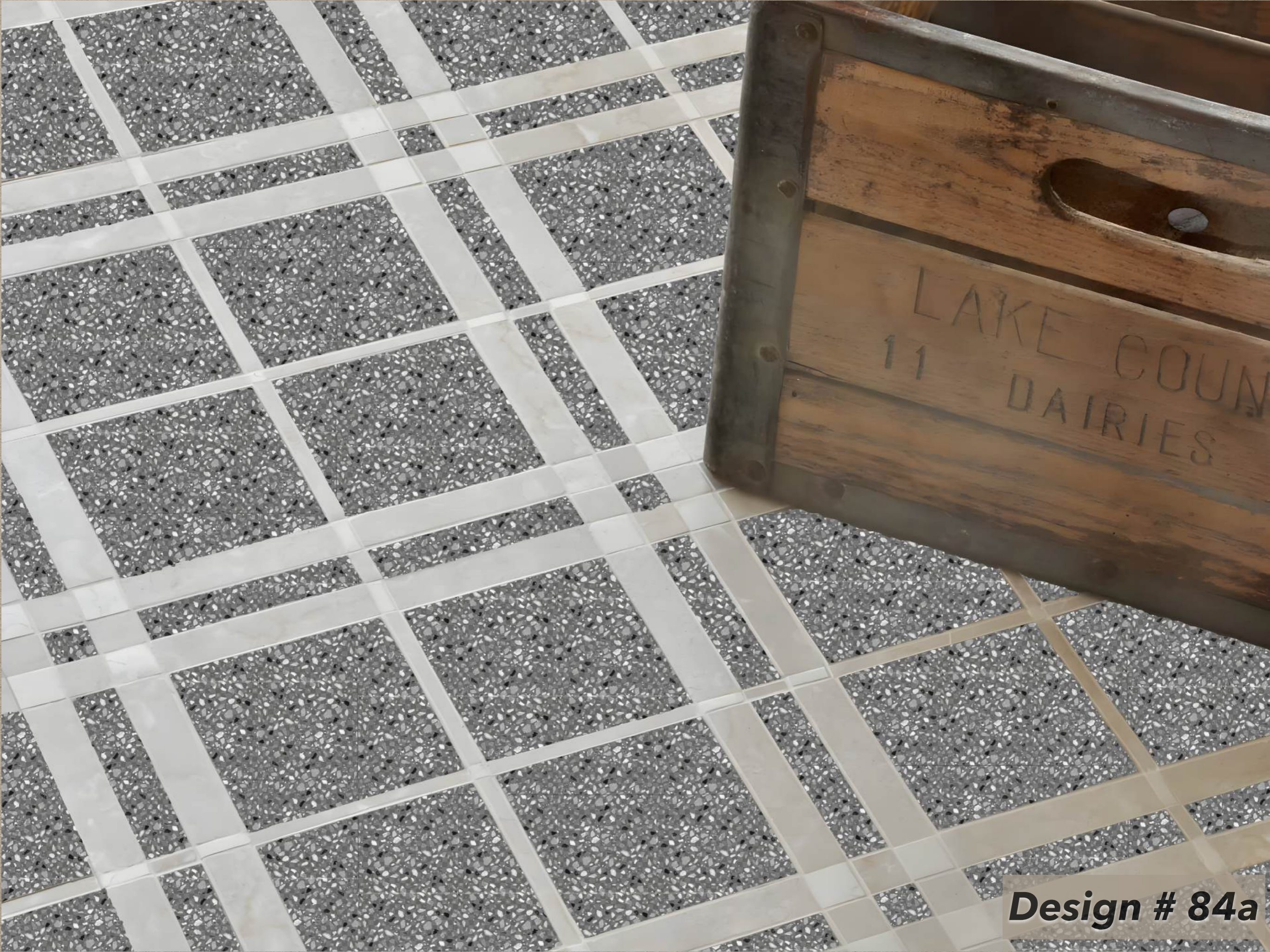
# **LYON - RAVENNA**

**SEAMLESS FLOORS WITH MODERN MOSAIC AND  
CEMENTITIOUS TERRAZZO. A KERAMOS  
ORIGINAL**





**Design # 83**



LAKE COUNTY  
11 DAIRIES

**Design # 84a**



**Design # 84b**



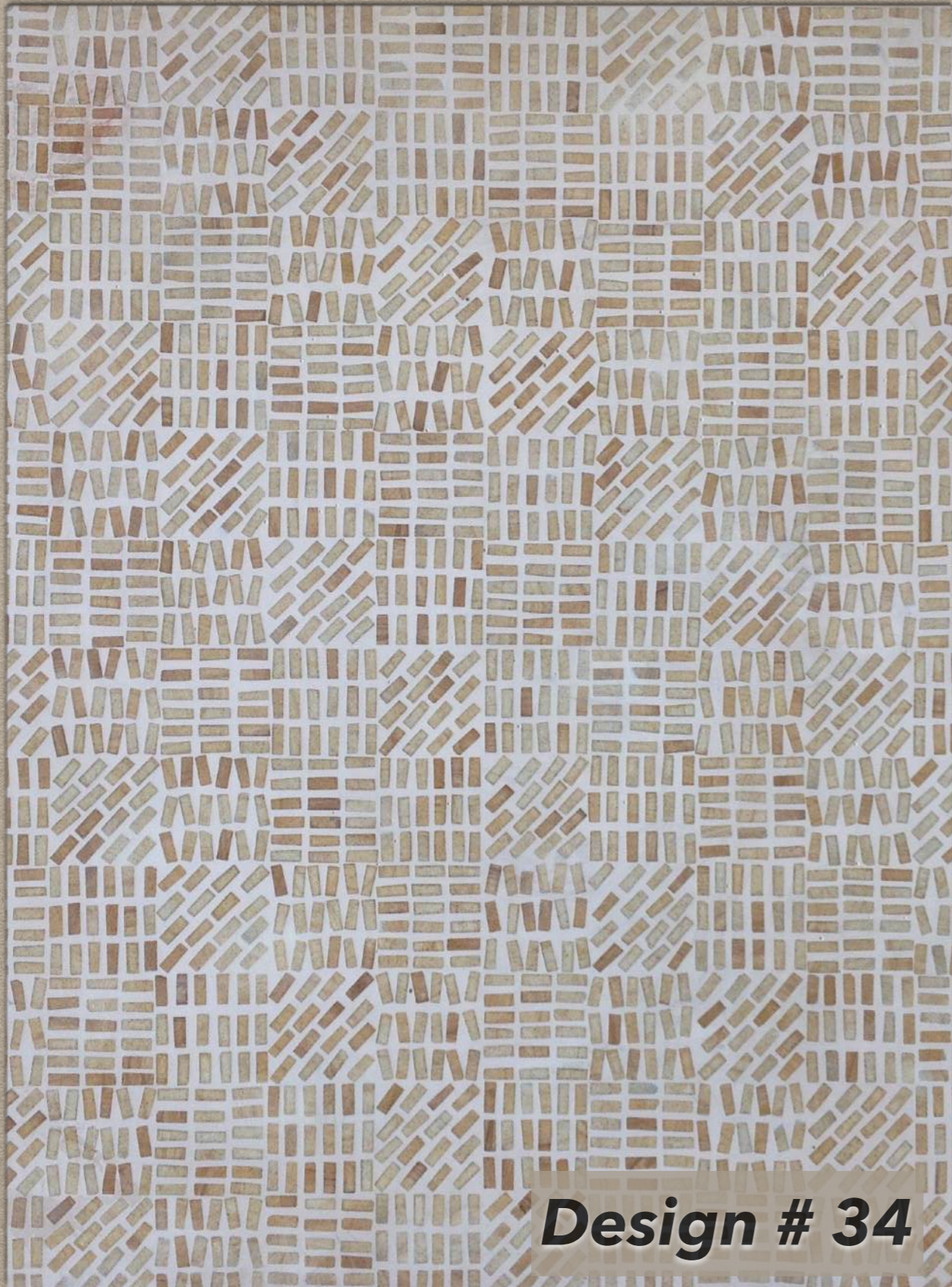
**Design # 84c**



***Design # 85***



***Design #90***



**Design # 34**



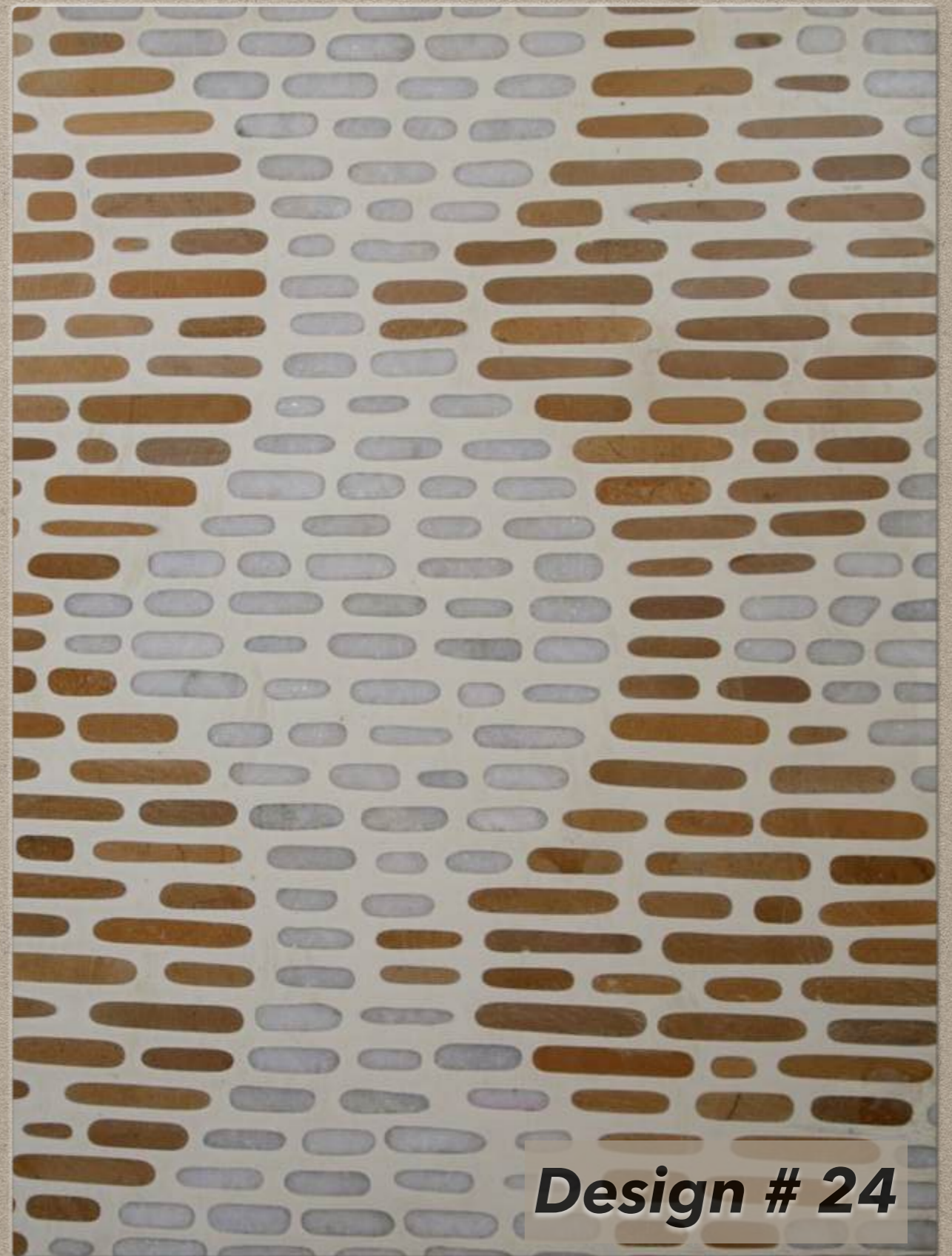
**Design # 30**



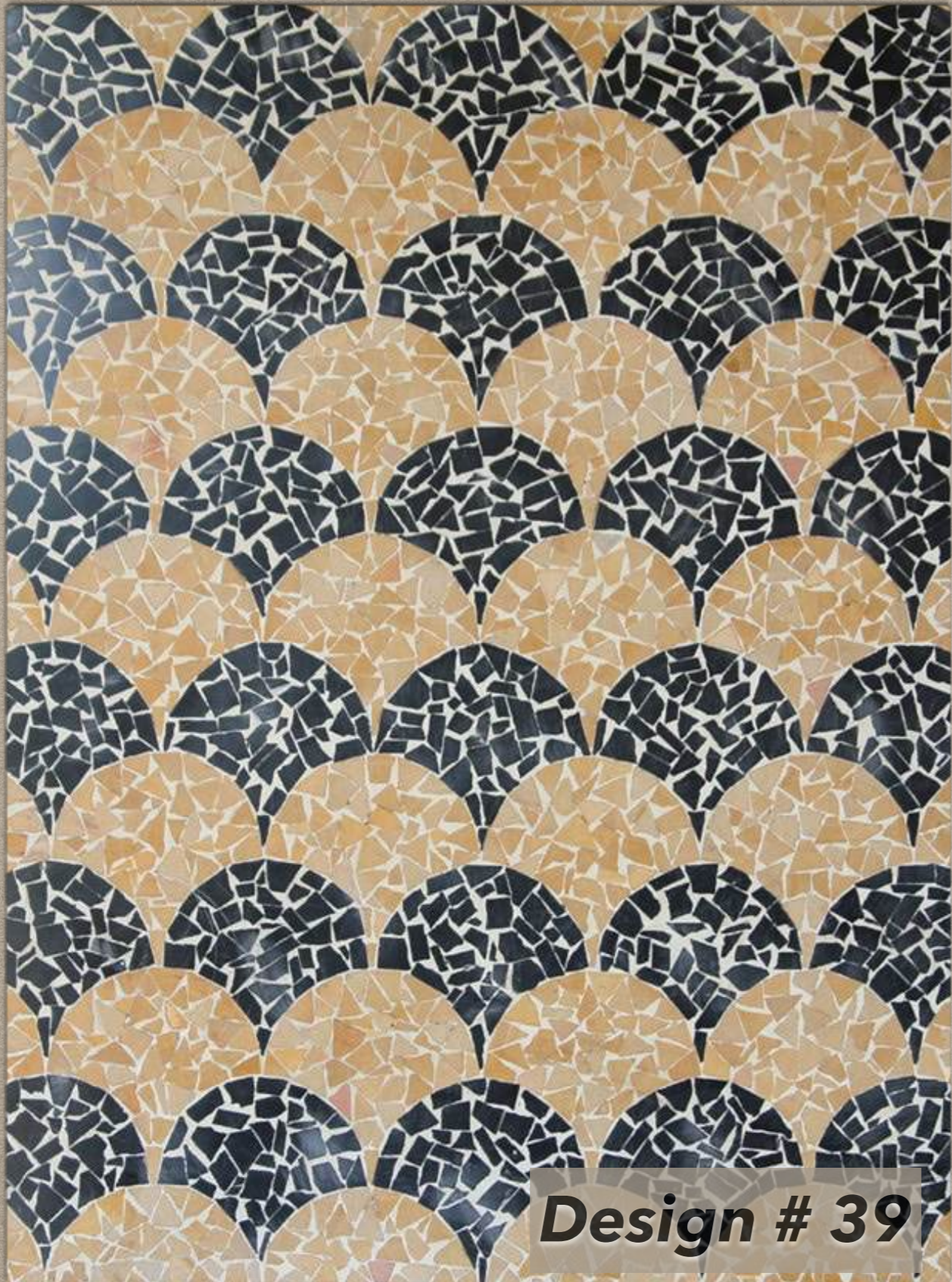
**Design # 17**



**Design # 1**



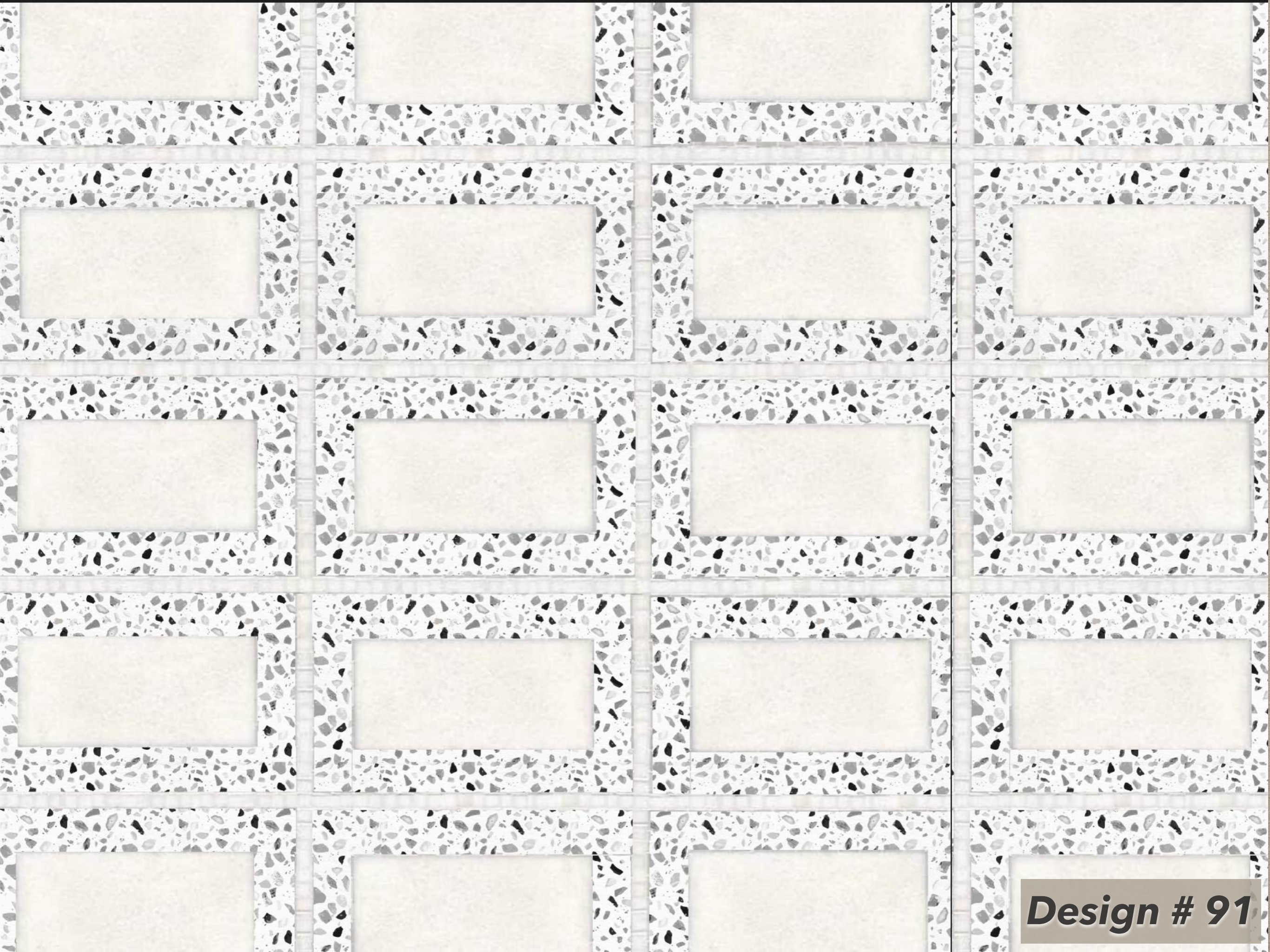




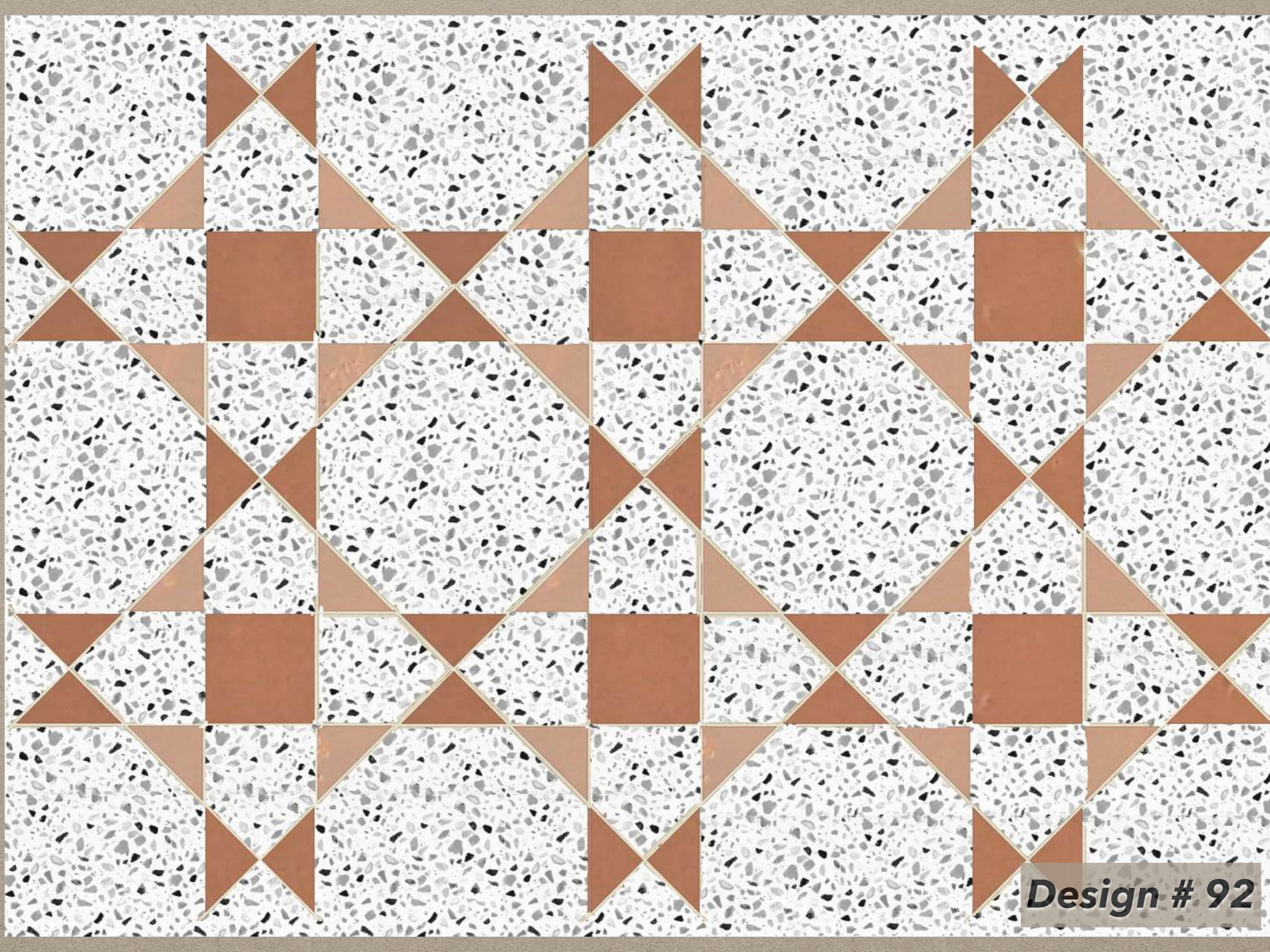
**Design # 39**



**Design # 52**



***Design # 91***



**Design # 92**

SPECIFICATION	DESCRIPTION
MATERIAL	STONE/STONE MOSAIC & STONE CHIPS, CEMENT
THICKNESS	12MM +/- 1MM APPROX
BASE PREPARATION	1 ¼" – 1 ¾" THICK CEMENT/SAND UNDERBED
COLORS	COMBINATION OF STONE AND CEMENT (IRON OXIDE) COLOURS
SURFACE	SLIGHT UNDULATIONS BUT NOT TO EXCEED 0.5MM
POROSITY	10-15% APPROX
UV STABILITY	VERY STABLE
STRENGTH	VERY HIGH
GLOSS	MEDIUM AND HIGH GLOSS POSSIBLE WITH POLISHING AND BUFFING
APPLICATION	INTERNAL & EXTERNAL FLOORS. PEDESTRIAN AREAS ONLY. NO VEHICULAR TRAFFIC. NOT RECOMMENDED FOR WET AREAS LIKE BATHROOM & KITCHEN
USES	HOMES, RETAIL, HOSPITALITY, INSTITUTIONS, BUILDINGS
INSTALLATION	CAST ON SITE. GRINDING AND POLISHING
STAIN RESISTANCE	MODERATE. CAN BE GREATLY IMPROVED WITH SEALANTS
PROJECT PRICE	ON REQUEST WITH QUANTITY

# DELIVERY TERMS

**Materials Delivery: 6 Weeks from the date of full payment.**

**Stated period of delivery with installation and polishing is for 500 - 1000 SQFT.**

**For larger quantity orders, kindly consult Sales & Marketing, Delhi for delivery period.**

**Minimum order quantity: 2000 SQ.FT**

**Customised designs possible. Please consult with our sales team directly.**

# TECHNICAL CONDITIONS

**Carefully Levelled RCC/PCC base 25mm below finished level to be provided by the client before Lyon floor can be installed.**

**PROTECTION : After the installation of STONE / TILES is complete, the floor must be covered till ALL construction work is complete. It is recommended that polythene sheet and jute bags should Allow the MATERIALS on the floor to cure for 10 DAYS after grouting and thereafter polishing will done in 7 days. DO NOT WALK on the floor before Polishing**

**Recommended for Internal / External floors and walls. Not suitable for vehicular driveways.**

**Sealer is necessary**

**The samples displayed in the showroom, or on the website, or approved, are approximate and indicative only. They CANNOT be matched exactly.**

**Natural stone varies in color, veining and shape from piece to piece and no two pieces will be exactly alike. Actual color variations / Size variation from lot to lot, and also within the lot. Also, Please Note Carefully : Color, Texture & Variation is indicative only matching of the display panel is not possible.**

# COMMERCIAL TERMS & CONDITIONS

**All prices are based on Indian Natural Stone and Vitrified tiles. Please inquire directly for Imported stones.**

**All prices are based on an order quantity between 2000 to 3000 SQFT**

**Cheques / Drafts to be made in the name of 'KERAMOS TILE & STONE PVT. LIMITED'**

**GST @ 18%, transportation and other levies will be extra at actual.**

**Payment terms: Full payment with the confirm order.**

**Kindly note that advance payment is not refundable/adjustable against cancellation.**

**Prices are subject to change without prior notice.**

**All KERAMOS designs are custom-made and supplied only against confirmed orders with full payment. Delivery periods are minimum 6 weeks depending on the quantity and design.**

**Please note that for all outstation orders, 100% outstation charges will be extra on the above prices.**

**GOODS ONCE SOLD CANNOT BE RETURNED OR EXCHANGED**

**No penalties are acceptable.**

**KERAMOS will not entertain any claims/refunds/replacements arising out of the above**

**All disputes are subject to Delhi jurisdiction only.**

**For prices & quotation please contact Ravindran  
9810385142, R.Anand 09818663525 with design no. and  
quantity required**

**Keramos Tile & Stone Pvt. Ltd**

**F-580, Lado Sarai, New Delhi - 110 030, INDIA (Next to  
ShantiVijay Jewellers), Tel : 011 46032765, 41665102,**

**Email: [delhi@keramosindia.com](mailto:delhi@keramosindia.com),  
[operations@keramosindia.com](mailto:operations@keramosindia.com),**

**Contact: Ravindran 9810385142, R.Anand 09818663525**